



## Dispensing Gun Direction for 845™ Adhesive – 400 ml cartridge



1. Press the lever at the end of the dispensing gun to release the metal plunger.



2. Hold down the lever and pull the metal plunger forward.



3. Twist the opaque / gray cap counterclockwise and open the cartridge nozzle.



4. Clear any obstructions inside the nozzle openings with a probe. Place the opaque / gray cap back on the cartridge and turn clockwise.



5. Insert the Weld-On 845™ adhesive cartridge into the dispensing gun.



6. Twist the opaque / gray cap counterclockwise.



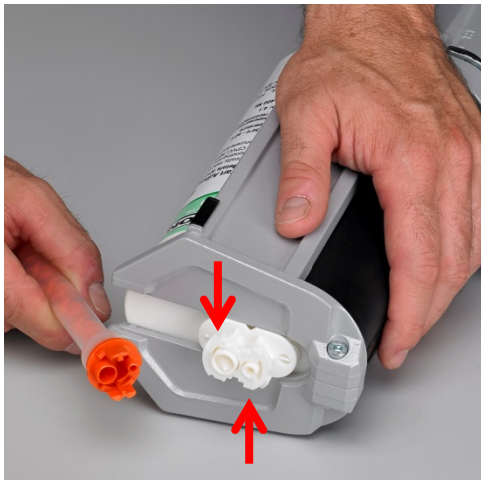
## Dispensing Gun Direction for 845™ Adhesive – 400 ml cartridge



7. Pull and remove the opaque / gray cap from the cartridge. Save the opaque cap for later use.



8. Squeeze the black lever and dispense a small amount of adhesive making sure that both components flow freely from the cartridge nozzle.



9. The cartridge has one large opening and one small opening. Ensure that the end of the mixing tip matches the cartridge openings.



10. Insert the mixing tip to the cartridge.



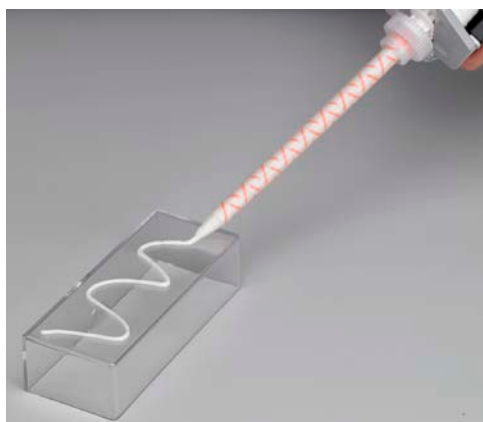
## Dispensing Gun Direction for 845™ Adhesive – 400 ml cartridge



11. Re-insert the opaque cap.



12. Turn the opaque cap clockwise to secure the mixing tip to the cartridge.



13. Squeeze the black lever and dispense approximately 1 to 2 inches to ensure both components of the adhesive are completely mixed before use.



14. The assembled dispensing gun is now ready for use. *Note: the adhesive inside the mixing tip may cure if the tip is left on the cartridge for a prolonged duration without additional use. In this case, keep the mixing tip on the cartridge. When you are ready to dispense the adhesive again, replace the mixing tip. Dispense and discard 1 – 2 inches of the adhesive prior to use.*