



THE WORLD'S MOST TRUSTED BOND

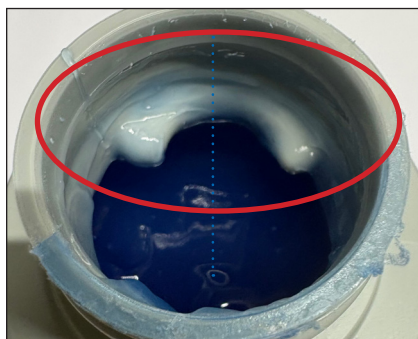
## DON'T WIPE AWAY THE STRENGTH OF YOUR JOINTS



Solvent welding is all about coverage. PVC solvent cement softens the pipe, fills the gap, and creates the bond that holds the system together. Without enough cement, dry spots can form inside the joint, leading to

leaks or even failure under pressure. For strong, leak-free joints, coverage is everything.

Some new packaging designs, such as the built-in wiper bottle, scrape cement off the brush before you apply it. That may look tidy, but it actually removes the very material needed for a reliable weld. What seems like a cleaner application is really a weaker connection.



Just look at this example: once the brush passes through the wiper, far less cement reaches the pipe. The result is less softened surface, less gap filling, and a weaker joint.

### Why Brush Applicator Design Matters

A properly designed brush applicator should hold the right amount of cement and deliver it smoothly to the joint. When the brush works as intended, there is no need for extra features that scrape material away. The very presence of a wiper suggests the brush applicator design is not carrying enough cement in the first place. Professionals know the applicator is part of the system — it should load fully and transfer cement evenly, not be trimmed back before it reaches the pipe.

### Application Consistency and Coverage

Some cements are formulated to provide smoother, more controlled application and to help limit drips during use. While these features can make handling easier, the key to long-term joint reliability remains the same by providing full coverage that softens the pipe surface and fills the entire socket gap. Proper application ensures a complete bond and prevents hidden weak spots inside the joint.

### Safety Concerns in the EU

Under European REACH and CLP regulations, solvent cements are classified as hazardous products and must be supplied with a Safety Data Sheet (SDS) in the local language. These documents clearly warn against eye and skin contact. Any packaging feature that increases the chance of splashes or flicking, such as built-in wipers that scrape the brush, raises the risk of chemical exposure. For professionals working under EU-OSHA guidance and national safety authorities, minimizing unnecessary hazards is just as important as ensuring joint performance.

### Long-Term Reliability and Cost

Applying generous cement is not only about passing an initial pressure test. Insufficiently cemented joints may appear fine at first but can weaken over time, leading to costly callbacks and system failures years later. A little extra cement at installation is far less expensive than repairing leaks, replacing pipe, or addressing water damage down the road. A properly filled joint ensures durability, performance, and peace of mind.

### Best Practice for Professionals

- Load the brush fully each time.
- Apply generously to both pipe and fitting.
- Allow proper cure time before pressurizing.

A little extra cement on the outside shows that the inside is fully coated. That visible bead is the mark of a joint you can trust.

### The Bottom Line

Strong connections do not come from shortcuts. Do not let gimmicks like built-in wiper bottle claims reduce the amount of cement applied to the joint. A properly designed brush applicator, generous coverage, and respect for cure times will always outperform packaging features that get in the way of best practice.

### Learn More

For more training and resources on best practices in solvent welding, visit [www.weldon.com/traininghub](http://www.weldon.com/traininghub). The Professional Training Hub is designed to help installers get it right the first time and stay confident on every project.

For more information visit [www.weldon.com](http://www.weldon.com) to learn more about our products.